

# Area Lighting

Installation : Menage

Project number : SOL2001

Customer : Solar Technology Ltd

Processed by :

Date : 15.05.2018

Project description:

The lighting for an area of 40m x 20m

Using the Areana fitting mounted at 6m and with a 30deg tilt.

Lighting levels achieved

5.85 lux average

.48 Uniformity

The following values are based on exact calculations on calibrated lamps, luminaires and their arrangement. In practice, gradual divergences can occur.

Guarantee claims for luminaire data are excluded.

Relux and the luminaire manufacturers accept no liability for consequential damage and damage which is occasioned to the user or to third parties.

Object : Area Lighting  
Installation : Menage  
Project number : SOL2001  
Date : 15.05.2018

# 1 Luminaire data

## 1.1 Shenzhen Sresky Co.,Ltd, Solar tech Areana light (!SCL-01)

### 1.1.1 Data sheet

Manufacturer: Shenzhen Sresky Co.,Ltd

#### !SCL-01 Solar tech Areana light

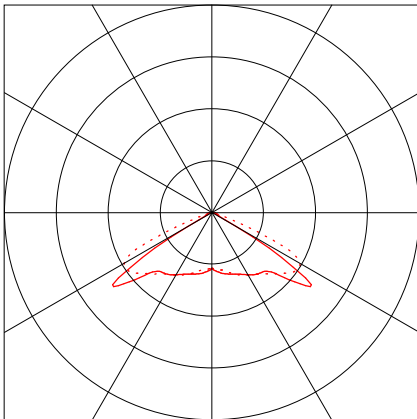
##### Luminaire data

Luminaire efficiency : 146.2%  
Luminaire efficacy :  
Classification : A30 ↓100.0% ↑0.0%  
CIE Flux Codes : 31 75 99 100 147  
UGR 4H 8H : 63.0 / 65.6  
Luminous flux : 1462 lm

##### Equipped with

Quantity : 1  
Designation :  
Colour :  
Luminous flux : 1000 lm

Dimensions : Ø500 mm x 1 mm

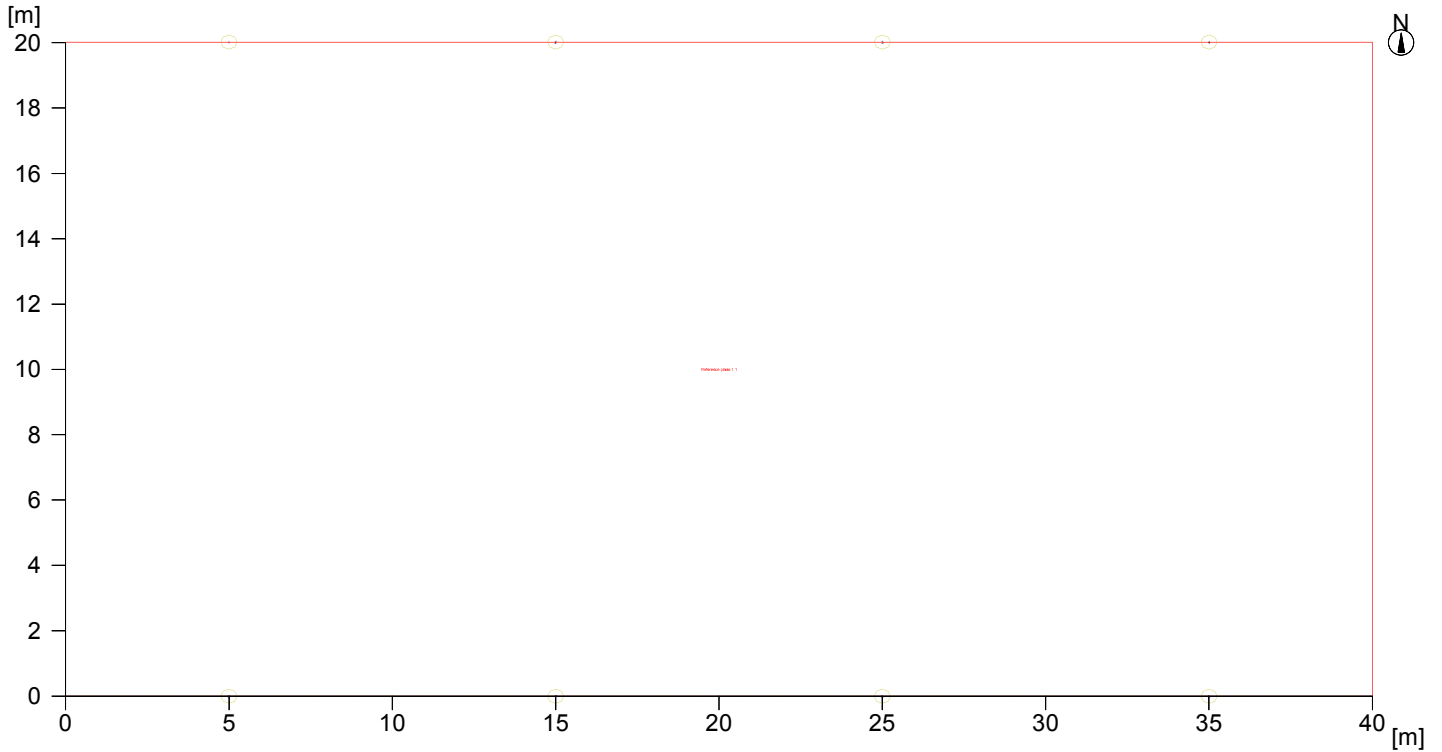


Object : Area Lighting  
Installation : Menage  
Project number : SOL2001  
Date : 15.05.2018

## 2 Exterior 1

### 2.1 Description, Exterior 1

#### 2.1.1 Floor plan

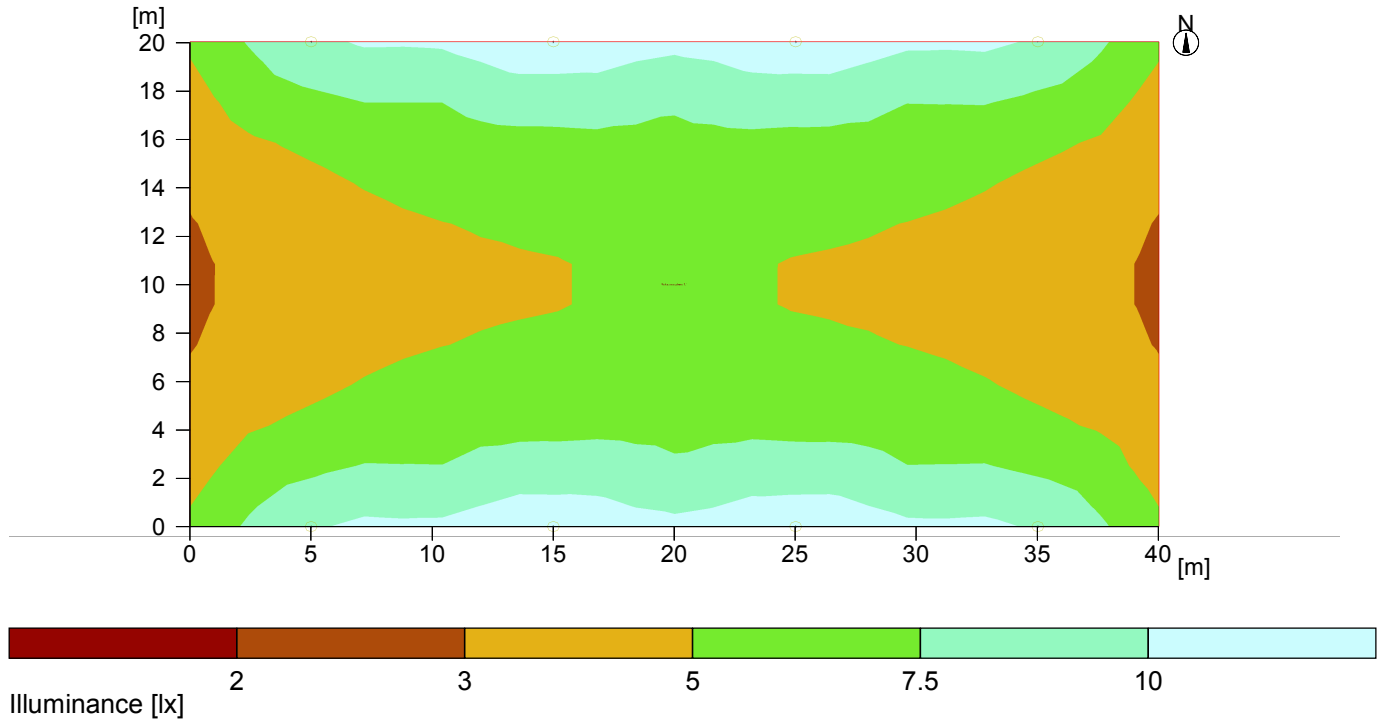


Object : Area Lighting  
 Installation : Menage  
 Project number : SOL2001  
 Date : 15.05.2018

## 2 Exterior 1

### 2.2 Summary, Exterior 1

#### 2.2.1 Result overview, Evaluation area 1



#### General

Calculation algorithm used	Average indirect fraction
Maintenance factor	0.90
Total luminous flux of all lamps	8000.00 lm

#### Evaluation area 1

#### Reference plane 1.1

	Horizontal
Em	5.85 lx
Emin	2.81 lx
Emin/Eav (Uo)	0.48
Emin/Emax (Ud)	0.28
Position	0.00 m

#### Type No.\Make

1	8	<b>Shenzhen Sresky Co.,Ltd</b>
		Order No. : ISCL-01
		Luminaire name : Solar tech Areana light
		Equipment : 1 x / 1000 lm

Object : Area Lighting  
 Installation : Menage  
 Project number : SOL2001  
 Date : 15.05.2018

## 2 Exterior 1

### 2.3 Calculation results, Exterior 1

#### 2.3.1 Table, Reference plane 1.1 (E)

[m]	5.3	6.7	7.8	8.5	8.9	8.9	9	9.5	[10.1]	[10.1]	10	9.5	9.2	9.5	10	[10.1]	[10.1]	9.5	9	9	9.1	8.7	8	6.8	5.4	
18	4.5	5.6	6.2	6.7	7.1	7.1	7.1	7.8	8.1	8.1	8.2	7.9	7.5	7.9	8.2	8.1	8.1	7.8	7.2	7.2	7.2	6.8	6.3	5.7	4.4	
16	3.7	4.5	4.9	5.2	5.6	5.8	6	6.4	6.5	6.5	6.6	6.5	6.4	6.5	6.6	6.5	6.5	6.4	6	5.8	5.7	5.3	4.9	4.5	3.7	
14	3.3	3.8	4.1	4.5	4.9	5.1	5.3	5.5	5.6	5.6	5.8	5.9	5.9	5.9	5.8	5.6	5.6	5.5	5.3	5.2	4.9	4.5	4.1	3.8	3.3	
12	3	3.3	3.6	3.9	4.2	4.5	4.7	4.8	4.9	5	5.1	5.3	5.3	5.3	5.1	5	4.9	4.9	4.7	4.5	4.2	3.9	3.6	3.3	3	
10	(2.8)	3.1	3.4	3.6	3.9	4.2	4.4	4.6	4.6	4.7	4.8	4.9	5	4.9	4.8	4.7	4.6	4.6	4.4	4.2	3.9	3.6	3.4	3.1	(2.8)	
8	(2.8)	3.1	3.4	3.6	3.9	4.2	4.4	4.6	4.6	4.7	4.8	4.9	5	4.9	4.8	4.7	4.6	4.6	4.4	4.2	3.9	3.6	3.4	3.1	(2.8)	
6	3	3.3	3.6	3.9	4.2	4.5	4.7	4.9	4.9	5	5.1	5.3	5.3	5.3	5.1	5	4.9	4.9	4.7	4.5	4.2	3.9	3.6	3.3	3	
4	3.3	3.8	4.1	4.5	4.9	5.2	5.3	5.5	5.6	5.6	5.8	5.9	5.9	5.9	5.8	5.6	5.6	5.5	5.3	5.2	4.9	4.5	4.1	3.8	3.3	
2	3.7	4.5	4.9	5.3	5.7	5.8	6	6.4	6.5	6.5	6.6	6.5	6.4	6.5	6.6	6.5	6.5	6.4	6	5.8	5.7	5.3	4.9	4.5	3.7	
	4.4	5.7	6.3	6.8	7.2	7.2	7.2	7.8	8.1	8.1	8.2	7.8	7.4	7.8	8.2	8.1	8.1	7.8	7.2	7.2	7.2	6.8	6.3	5.7	4.4	
	5.4	6.8	8	8.7	9.1	9	9	9.5	[10.1]	[10.1]	10	9.4	9.2	9.4	10	[10.1]	[10.1]	9.5	9	9	9.1	8.7	8	6.8	5.4	
				5		10		15		20		25		30		35										
	Illuminance [lx]																									



Height of the reference plane : 0.00 m  
 Average illuminance Eav : 5.8 lx  
 Minimum illuminance Emin : 2.8 lx  
 Maximum illuminance Emax : 10.1 lx  
 Uniformity Uo Emin/Eav : 1 : 2.08 (0.48)  
 Diversity Ud Emin/Emax : 1 : 3.60 (0.28)

Object : Area Lighting  
Installation : Menage  
Project number : SOL2001  
Date : 15.05.2018

## 2.3 Calculation results, Exterior 1

### 2.3.2 3D pseudo colours, View 1 (E)

